

**Daniels Field Multipurpose Recreational Area – RFI #17**

On the next 4 pages is a revised Gates key plan (4 sheets) for the project. Noted below is the new Gates Schedule. This new schedule replaces the existing door schedule located on SP-2.1 and SP-2.2. These revised gates are in response to the revised fence heights required due to the Basketball court back board heights. The fence heights were covered in the recent RFI#10.

**Chain link Gate Schedule**

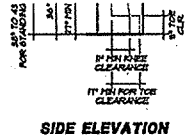
<u>SYM</u>	<u>TYP</u>	<u>W. x H</u>
G-1	(pair)	3'-0" x 10'-0"
G-2	(single)	3'-0" x 8'-0"
G-3	(single)	3'-0" x 8'-0"
G-4	(single)	3'-0" x 8'-0"
G-5	(single)	3'-0" x 8'-0"
G-6	(pair)	3'-0" x 8'-0"
G-7	(pair)	4'-0" x 8'-0"
G-8	(pair)	4'-0" x 12'-0"
G-9	(pair)	3'-0" x 12'-0"
G-10	(single)	3'-6" x 3'-6"
G-11	(pair)	6'-0" x 3'-6"
G-12	(pair)	6'-0" X 12'-0" (field verify)
G-13	(single)	3'-0" x 12'-0" (field verify)



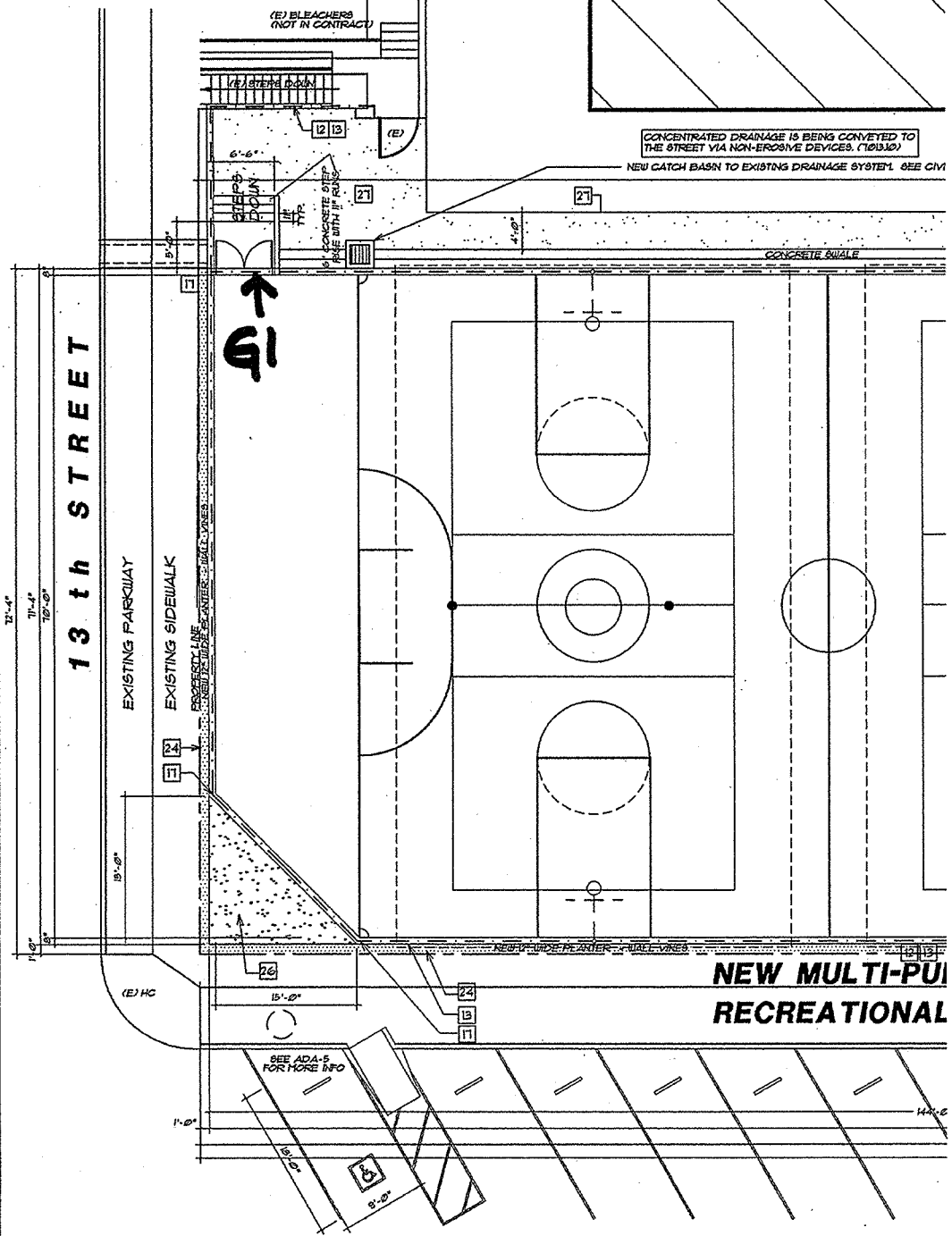
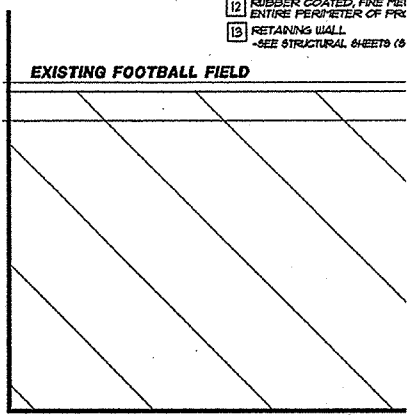
RFI # 17  
 OS. 03.13  
 RA. 2002.005  
 DANIELS FIELD H.S.C.

2/4

- CBC**
- CONTROL & SPOUTS**
- FORCE TO OPERATE CONTROLS IS 5 LBS MAX
  - CONTROLS ARE OPERABLE WITH ONE HAND & DO NOT REQUIRE TIGHT GRASPING, PINCHING, OR TWISTING OF THE WRIST
  - LEVER-OPERATED, PUSH-TYPE ELECTRONICALLY CONTROLLED ARE COMPLIANT
  - LOW SPOUT OUTLETS ARE LOCATED 5" MAX AFF WITH AN ADDITIONAL 4" MIN HOT WATER FLOW
  - HI SPOUT OUTLETS FOR STANDING PERSONS ARE 36" TO 43" MAX AFF
  - SPOUT OUTLETS ARE LOCATED 5" MAX FROM THE FRONT EDGE AND 18" MIN FROM THE SUPPORT AT THE BACK OF THE UNIT
  - IF THE SPOUT IS LOCATED LESS THAN 3" FROM THE FRONT OF THE UNIT THE WATER STREAM IS ANGLED 30 MAX MEASURED HORIZONTALLY FROM THE FRONT EDGE & SUBSTANTIALLY PARALLEL TO THE FRONT EDGE PER CBC
  - ROUND OR OVAL BOULDS HAVE SPOUT WITHIN 3" OF FRONT EDGE PER CBC
  - THE ACTIVATOR IS FRONT OR SIDE MOUNTED WITHIN 6" OF THE FRONT EDGE PER CBC
  - A PARALLEL APPROACH IS PERMITTED FOR DRINKING FOUNTAINS FOR CHILDRENS USE WITH THE SPOUT AT 36" MAX AFF AND 3 1/2" MAX FROM THE FRONT EDGE OF THE UNIT - ALCOVES NEED TO BE 60" MIN WIDE IF RECESSED OVER 4" DEEP.
  - PROVIDE KNEE CLEARANCE OF 30" FOR KINDERSARTEN / PRESCHOOL AGES 3-6 & 24" FOR ELEMENTARY SCHOOL AGES 6-12 PER CBC
  - SUGGESTED HEIGHT FOR ACTIVATOR IS 30" FOR AGES 3-6 & 33" MAX FOR AGES 6-12 PER CBC



- 2A HC WATER FOUNTAIN DOUBLE HI-LOW (1 OF 3)
- 6 NOT USED
- 7 SKATE PARK MULTI PURPOSE
- 8 STORAGE AREA FOR FIELD
- 9 ACTIVITIES DISPLAY (DEF)
- 10 RULES SIGNAGE (DEFENSE)
- 11 FUTURE ACTIVITIES SIGNAGE
- 12 RUBBER COATED, FINE MESH ENTIRE PERIMETER OF FRI
- 13 RETAINING WALL - SEE STRUCTURAL SHEETS 18



CONCENTRATED DRAINAGE IS BEING CONVEYED TO THE STREET VIA NON-EROSIVE DEVICES. (10/10/02)

NEW CATCH BASIN TO EXISTING DRAINAGE SYSTEM. SEE CIV

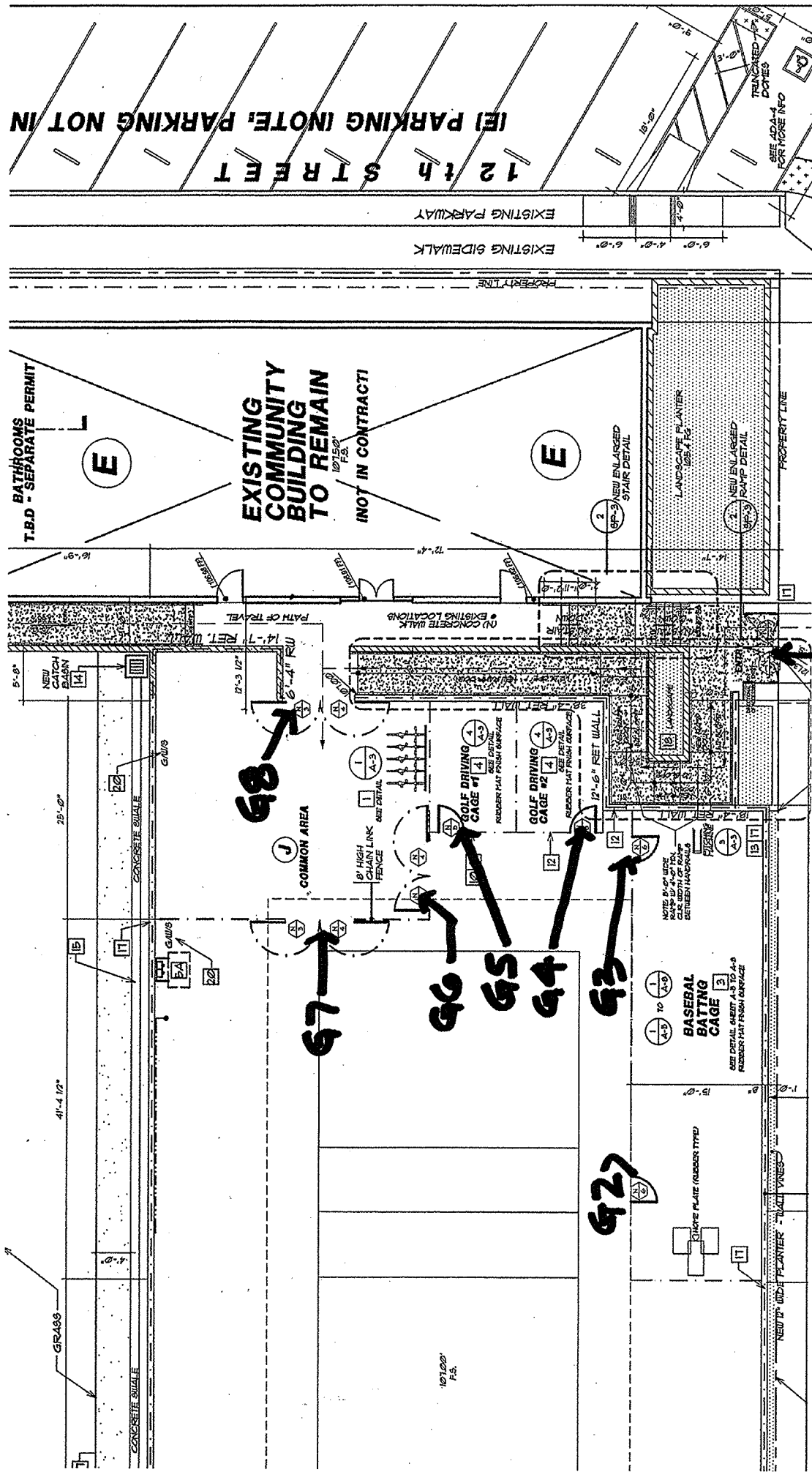
**NEW MULTI-PURPOSE RECREATIONAL**

SEE ADA-5 FOR MORE INFO

REF #17  
GATES

OS. 03.13  
RA. 2002.005  
DANIELS FIELD M.S.C.

3/4



12th STREET  
EXISTING PARKWAY  
EXISTING SIDEWALK

EXISTING COMMUNITY BUILDING TO REMAIN  
NOT IN CONTRACT

BASEBALL BATTING CAGE  
SEE DETAIL SHEET A-3 TO A-9  
RUBBER MAT FLOOR SURFACE

GOLF DRIVING CAGE #1  
SEE DETAIL SHEET A-3 TO A-9  
RUBBER MAT FLOOR SURFACE

GOLF DRIVING CAGE #2  
SEE DETAIL SHEET A-3 TO A-9  
RUBBER MAT FLOOR SURFACE

BATHROOMS - SEPARATE PERMIT  
T.B.D.

LANDSCAPE PLANTER  
USE A-12

NEW ENLARGED RAMP DETAIL  
USE A-3

NEW ENLARGED STAIR DETAIL  
USE A-3

SEE A0-A4 FOR MORE INFO  
TRUNCATED CORNER

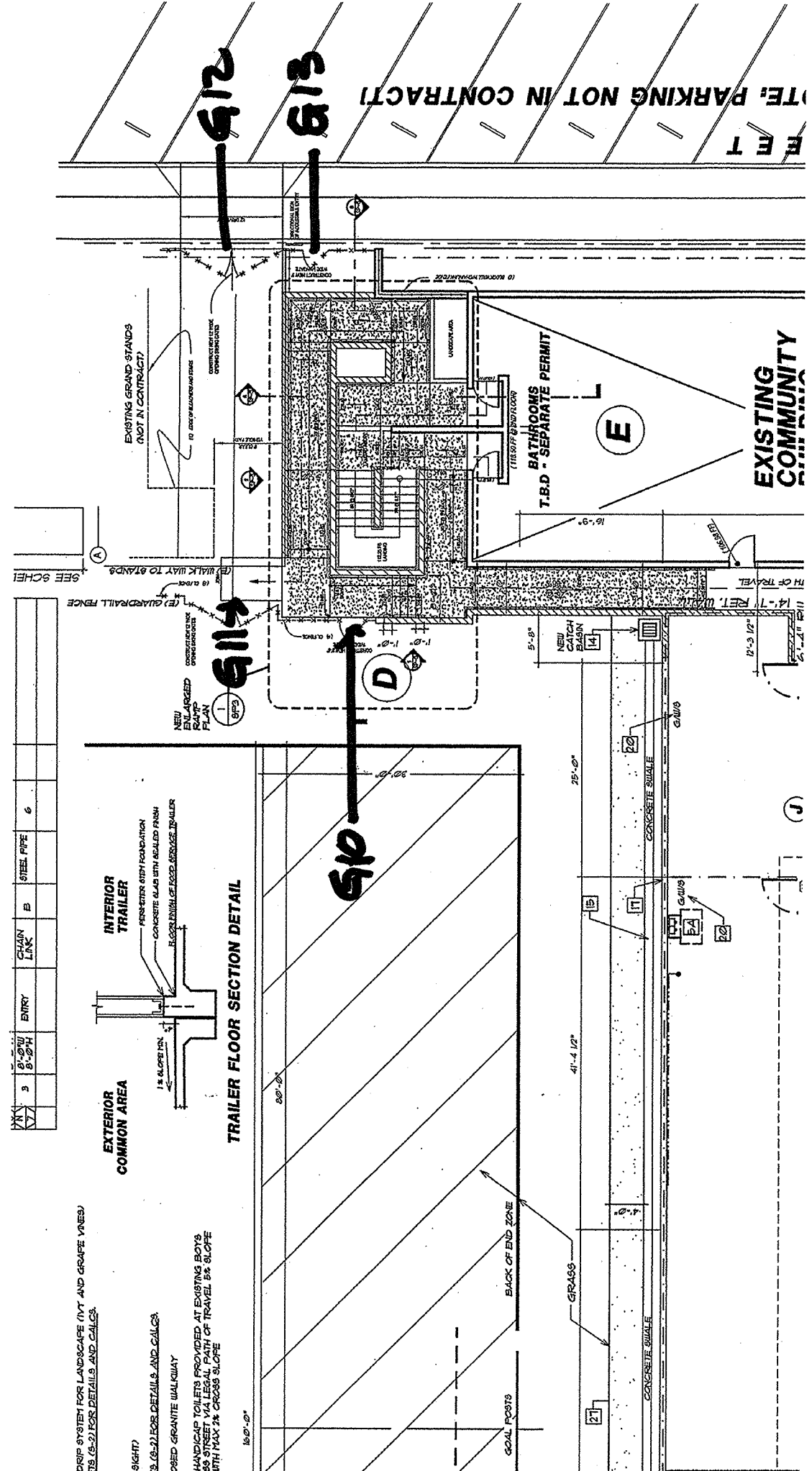
10'100'  
F.S.

REF # 17  
GATES

OS. 05.13  
BA. 2002.005

4/4

DANIELS FIELD H.S.C.



FEET  
SITE, PARKING NOT IN CONTRACT

EXISTING COMMUNITY BUILDING

BATHROOMS T.B.D - SEPARATE PERMIT

EXISTING GRASS STANDS (NOT IN CONTRACT)

DRIP SYSTEM FOR LANDSCAPE (NOT AND GRAPE VINES)  
TO BE INSTALLED FOR DETAILS AND CALLS.

SIGHT

3'-10" FOR DETAILS AND CALLS.

PAVED GRANITE WALLWAY

HANDICAP TOILETS PROVIDED AT EXISTING BOYS TOILET BUILDING WITH 2% SLOPE WITH MAX 2% CROSS SLOPE