

**Daniels Field Multipurpose Recreational Area Project
For the Boys and Girls Clubs of the Los Angeles Harbor
1200 S. Cabrillo Avenue, San Pedro, CA 90731
Addendum Two (2) - Bid Due Date Extension and New Fence Specifications
Issued May 3, 2013**

This addendum amends the Notice of Invitation to Bid advertised on March 12, 2013 for design and construction of a multi-purpose recreational area for the Boys and Girls Clubs of the Los Angeles Harbor at 845 West 12th St., San Pedro, CA 90731. This addendum of clarifications and/or additional instructions takes precedence over the published specifications. All addenda will be through the project website at:

<http://urbandesigndesigncenter.com/bidcenter/danielsfieldmultipurposerecreationalarea.html>

It is the responsibility of the General Contractor to disburse addenda to all subcontractors.

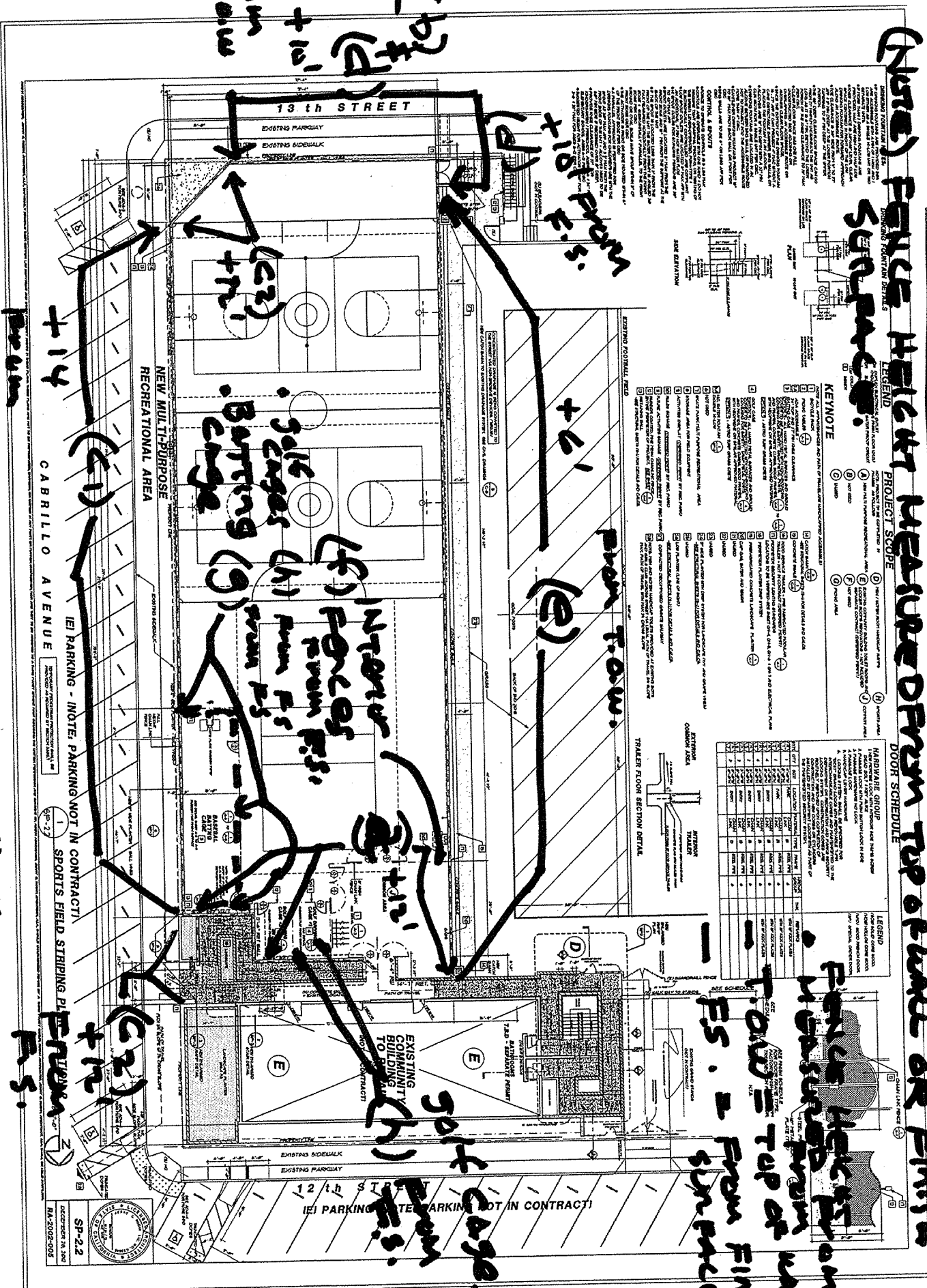
1. The deadline for submission of bids has changed. Sealed bids will be received up to 4:00 p.m. on May 14, 2013.
2. Chain link fencing to be as follows:
 - a. Chain link size:
 - i. Option #1 – 1”
 - ii. Option #2 – 2”
 - iii. Both options 1&2 above (base fencing materials to be as follows):
 1. 9 Gauge finish
 2. 12 gauge core wire
 3. vinyl wrapped
 4. color – Department of Recreation Parks color guide – number VP-284193 - “Bottle Green” or approved equal for color.
 5. Top and bottom edges of chain link fencing to be Selvage (knuckle/knuckle)
 6. Top rail of fence to be “arched wave”
 7. Bottom of fence to be Tension wire
 8. Drawing sheet SP-2.2 governs for scope of fencing to be installed.
 9. See attached fence chart for fence heights
 10. Double gates (chain link) to be installed at the south west exit to the football field exit area. Gates to be 3’-0” wide x 8’-0” high.
 11. Interior fences to be 8’-0” high
 12. All other chain link fence door/gates to be 8’-0” high (see door schedule on SP-2.2)
 13. All chain link fencing at batting cage (4 sides), or any fence 12’-0” or higher to receive - top, middle and bottom railing.
 14. Chain link Fence pipe(s) and railing(s) to be powder coat painted.
 - b. Fence heights (see Fence Height Guide on page 3 of this addendum)
 - i. North Fence 12’-0” (a)
 - ii. South Fence -partial south fence 10’-0” (and see east fence below for diagonal fence height 12’-0”)

- iii. East Fence - (c1) Upper fence at sports area 14'-0". (c2) Lower Fence at south east diagonal corner 12'-0"
- iv. West fence at exit stair – approx 10'-0" (d) (and partial south fence)
- v. West Fence 6'-0" (e)
- vi. Interior fences 8'-0" (f)
- vii. Batting Cage (interior sides) 12'-0" (g)
- viii. Golf cages (interior sides) 12'-0" (h)

Except as specifically amended herein, all specifications, terms and conditions of the Notice of Invitation to Bid remain in full force and effect.

FENCE HEIGHT GUIDE - RFI # 2

(NOTE) FENCE HEIGHT MEASURED FROM TOP OF FINISH SURFACE OR FINISH



KEYNOTE

KEYNOTE	DESCRIPTION
1	SEE NOTE 1
2	SEE NOTE 2
3	SEE NOTE 3
4	SEE NOTE 4
5	SEE NOTE 5
6	SEE NOTE 6
7	SEE NOTE 7
8	SEE NOTE 8
9	SEE NOTE 9
10	SEE NOTE 10
11	SEE NOTE 11
12	SEE NOTE 12
13	SEE NOTE 13
14	SEE NOTE 14
15	SEE NOTE 15
16	SEE NOTE 16
17	SEE NOTE 17
18	SEE NOTE 18
19	SEE NOTE 19
20	SEE NOTE 20
21	SEE NOTE 21
22	SEE NOTE 22
23	SEE NOTE 23
24	SEE NOTE 24
25	SEE NOTE 25
26	SEE NOTE 26
27	SEE NOTE 27
28	SEE NOTE 28
29	SEE NOTE 29
30	SEE NOTE 30
31	SEE NOTE 31
32	SEE NOTE 32
33	SEE NOTE 33
34	SEE NOTE 34
35	SEE NOTE 35
36	SEE NOTE 36
37	SEE NOTE 37
38	SEE NOTE 38
39	SEE NOTE 39
40	SEE NOTE 40
41	SEE NOTE 41
42	SEE NOTE 42
43	SEE NOTE 43
44	SEE NOTE 44
45	SEE NOTE 45
46	SEE NOTE 46
47	SEE NOTE 47
48	SEE NOTE 48
49	SEE NOTE 49
50	SEE NOTE 50

HARDWARE GROUP

GROUP	ITEM	DESCRIPTION	QTY	UNIT	PRICE
FENCE POSTS	1	4" X 4" X 8' GALV. STEEL	100	EA	1.50
	2	4" X 4" X 6' GALV. STEEL	100	EA	1.20
	3	4" X 4" X 4' GALV. STEEL	100	EA	0.90
	4	4" X 4" X 2' GALV. STEEL	100	EA	0.60
FENCE RAILS	1	2" X 4" X 8' GALV. STEEL	100	EA	1.20
	2	2" X 4" X 6' GALV. STEEL	100	EA	0.90
	3	2" X 4" X 4' GALV. STEEL	100	EA	0.60
	4	2" X 4" X 2' GALV. STEEL	100	EA	0.30
FENCE CAPS	1	4" X 4" X 8' GALV. STEEL	100	EA	1.50
	2	4" X 4" X 6' GALV. STEEL	100	EA	1.20
	3	4" X 4" X 4' GALV. STEEL	100	EA	0.90
	4	4" X 4" X 2' GALV. STEEL	100	EA	0.60

05.02.13 124.2002.005 / MULTI-PURPOSE STAGES
 DANIELS PAPER RPT # 10 FROM #

SP-22
 DECEMBER 19, 2002
 RA-2002-005